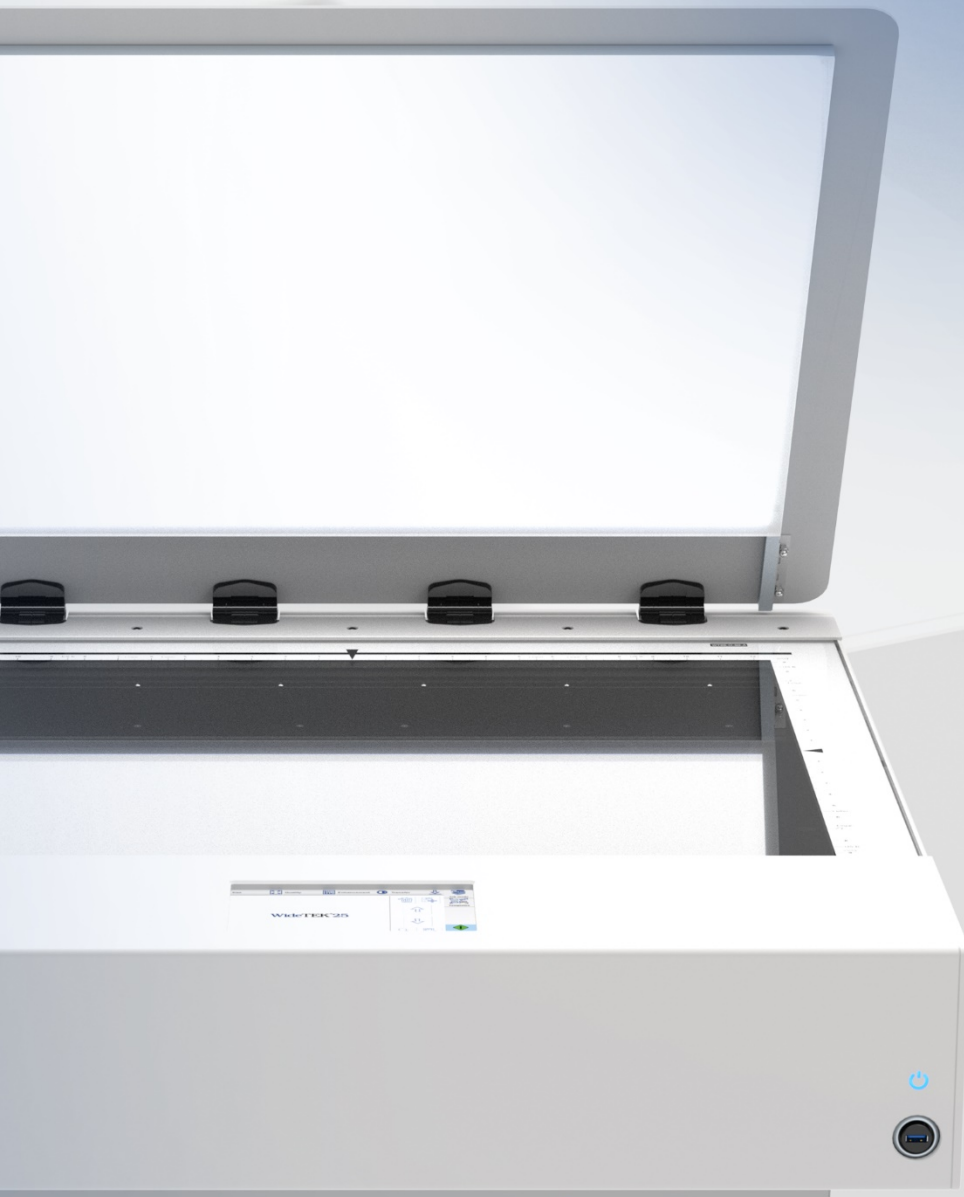


WideTEK[®] 25 Accessories Backlight Unit

*Scan X-Rays and other transparent
material with the optional backlight unit*



***World's most compact DINA2
flatbed scanner with 3D scanning
just got better with the backlight unit***



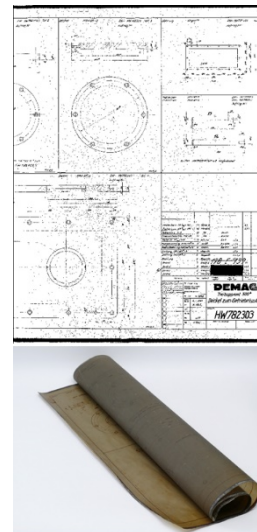
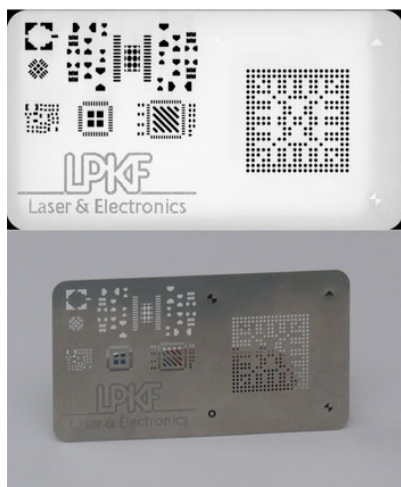
© 11-2017 / EN

WideTEK® 25 Backlight Unit for Film, X-Rays and other Specialty Scans

For digitizing film footage, X-rays and other transparent material, an optional backlight unit is now available for the WideTEK 25-650 flatbed scanner. The WT25-BACKLIGHT is integrated in the scanner lid and can be easily installed by the user, enabling both normal and transparent source material to be scanned.

The backlight unit enhances the already impressive functionality of the WideTEK 25. It can scan both reflective originals as well as transparent material in the same resolution of up to 1200 dpi optical and using 3D surface scanning techniques if desired. There are many film scanners available on the market for small image formats and even medium sized images, but in the large format range, film scanners are very rare and/or prohibitively expensive.

WideTEK 25-650 is unbeaten in speed and image quality. Adding this option enables operators to scan medium format and large format films and glass negatives of up to 635 x 470 mm (18.5 x 25 inches) in less than 6 seconds at 600 dpi. And, costing less than 800 Euros (less than \$1000), this enhancement to the WideTEK 25-650 makes it an even more powerful production scanner for nearly any industry.



Features of the WideTEK 25 Scanner

- 18.5 x 25" or ISO/DIN A2 scan of full document bed in < 3 seconds
- 48 bit color depth
- Captures 3D surfaces, textures of various materials, Braille print
- 1200 x 1200 dpi scanner resolution
- Automatic crop and deskew
- Small footprint, 30 inch width, fits on any desktop
- Scan2USB – Walk up scanning to a USB device
- Scan2Print – Copy to networked printers or hot folders
- Scan2Network – Output to network resources, SMB, FTP
- Output formats: PDF, PDF/A, JPEG, TIFF, PNM, multipage PDF and TIFF, DICOM and many more
- Scan2Pad® – Operation via tablets or other mobile devices
- ScanWizard uses any browser: IE, Safari, Chrome, Firefox

Market Applications of the WideTEK 25 with Backlight Unit

- Scan X-rays, glass photo negatives, up to 635 x 470 mm (18.5 x 25 inches) in size, 35mm microfilm aperture card conversion/archiving
- Digitize cut-out originals and stencils and use the 3D surface scanning functionality for even more detail

Scan results from the WideTEK 25 with backlight unit. The top images are scans of source material using the backlight unit, below them are high quality photos.

TECHNICAL DATA

Dimensions	40 x 743 x 626 mm (1.6 x 29.5 x 24.7 inch) (H x W x D)
Weight	4.1 kg / 9 lbs.
Electrical Connection	100 – 240 V AC, 47 – 63 Hz (external power supply, complies with ECO standard GEC level VI)
Power Consumption	< 0.5 W (Off) / < 100 W (On)
Operating Temperature	5 to 40 °C, 40 to 105 °F

IMAGE ACCESS GMBH

Hatzfelder Str. 161-163
42281 Wuppertal, Germany
Tel.: +49 (0)202 27058-0
www.imageaccess.de

IMAGE ACCESS LP

2511 Technology Drive, Suite 109
Elgin, IL 60124, USA
Office: +1 (224) 293-2585
Sales: +1 (727) 612-0809
www.imageaccess.us

