



# Transparent Document Carrier

<b>Title</b>	<b>Transparent Document Carrier</b>	
<b>Product #</b>	<b>A0-ENVELOPE</b>	ISO/DINA0, 49" x 37", ANSI-E and ARCH-E
<b>Product #</b>	<b>A1-ENVELOPE</b>	IS1/DINA1, 37" x 26", ANSI-D and ARCH-D
<b>Revision</b>	1.1	
<b>Date</b>	27.02.2018	

©04/2017 Image Access GmbH, all rights reserved. Reproduction in any form is prohibited.

Scan2Net®, Bookeye® and WideTEK® are registered trademarks of Image Access, all other trademarks are the property of their respective owners.

## Description

### Transparent document carriers for fragile document handling

Extra strong, clear and antistatic transparent document carriers protect your most fragile documents while enabling you to scan at the very high speeds attainable on WideTEK sheetfeed scanners. The document carriers can be used on all sheetfeed scanners, including the WT36DS double sided 36" CCD scanner, for scanning double sided documents in a single pass through the scanner. The carriers protect not only the documents themselves but also preserve the color of the scanner's background drums, whether they are black or white.

Document carriers consist of two sheets, both of which are clear. They are 165µm thick and open on three sides for ease in handling. When preparing to scan valuable, fragile, brittle and torn documents; the carriers can be opened and the documents inserted while the carrier is held by the scanner. Only the top sheet needs to be lifted and can be folded back over the scanner for loading documents. This unique feature works perfectly together with all WideTEK scanners, from CIS based WT36CL to the CCD based top model WT48 and the WideTEK 36DS duplex scanner, as previously noted. Scanning cycle times for wrinkled, crumbled or partially destroyed documents are typically faster and definitely safer, compared to feeding them directly. Extra slow scanning speeds are no longer necessary.

### Features of the Transparent Document Carriers

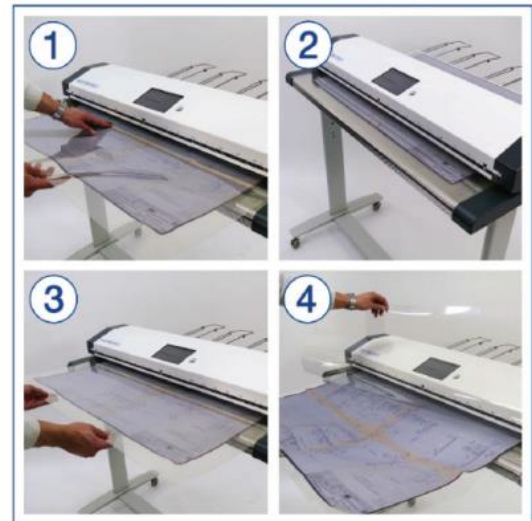
- Available in two sizes: A0 (49" x 37") and A1 (37" x 26")
- Two clear sheets attached, 165µm thick and open on three sides
- Works with CIS and CCD scanners including duplex model
- Scan at high speeds while protecting fragile or damaged documents
- Preserves the color of the scanner's background drum
- Antistatic, extra strong material for prolonged use

### Market Applications

- Newspaper scanning
- Conversion projects including delicate, valuable, old and crumpled documents
- Scanning and restoring partially destroyed documents

## Usage

As soon as the scanner's paper sensor detects the transparent carrier, it pulls it in to the starting position. The envelope can be opened with the top laying over the scanner's upper body. Then, the document can be easily inserted and the carrier can be closed. The pictures 1 - 4 show a full sequence. It should be noted, that the carrier does not have to be removed for a consecutive scan.



## Limits of operation

Although the the document carriers are transparent, they change the scanning results:

1. The document carrier covers the normal scan background inside the scanner and will effect the document format detection.
2. The optical characteristics of the document carrier will restrict the image quality.

## Automatic document format detection

One effect is that the document width detection, which is processed when a document is detected under the paper sensor, will always recognize the width of the carrier and not the width of the document inside the carrier. Therefore, the document size mode 'Auto' will fail and provide the full width of the carrier.

Use the document size mode 'Crop and Deskew' instead.

The 'Crop and Deskew' process is optimized to recognize dark edged documents on a black scan background, white documents on a white scan background and grey newspapers on a grey scan background. The optical characteristics of the document carriers will downgrade the capabilities of this process slightly.

Modify the parameter 'Auto Density' in ScanWizard if necessary.

Raise the value to 80 if parts of the carrier appear all around the document.

On the Scan2Net API level (external applications): `autoformat_density:80`

## Image Exposure

The scanned images from the document inside the document carrier will look slightly yellow.

This can be corrected with modified parameters:

1. On a WideTEK 36|44|48-600:  
In ScanWizard: Gain Red:0, Gain Green:1, Gain Blue:1  
On the S2N API level (external applications): `gain_r:0, gain_g:1, gain_b:7`
2. On a WideTEK 36CL-600:  
In ScanWizard: Gain Red:0, Gain Green:2, Gain Blue:9  
On the S2N API level (external applications): `gain_r:0, gain_g:2, gain_b:9`

After this, the images are still somewhat low in contrast.

This can be corrected with modified parameters:

1. For natural exposure:  
In ScanWizard: Brightness 55%, Contrast 55%  
On the S2N API level (external applications): `bright:140, contrast: 140`
2. For saturated exposure:  
In ScanWizard: Brightness 60%, Contrast 60%  
On the S2N API level (external applications): `bright:153, contrast:153`